

The City of Encinitas
Invites you to attend a:

NEIGHBORHOOD MEETING
LEUCADIA AT-GRADE
RAIL CROSSINGS

The proposed crossings are located along the railroad corridor between Leucadia Blvd. and La Costa Avenue in the City of Encinitas. The City has been studying the potential of installing (2) at-grade railroad crossings along the LOSSAN Railroad Track within the Community of Leucadia in order to allow pedestrians and bicyclists to safely and legally cross the railroad tracks. The Community of Leucadia has been separated with many businesses, restaurants, and shops located on the west side of the LOSSAN Corridor and residential homes on the east side of the LOSSAN Corridor. Numerous studies have been prepared indicating possible crossings to accommodate citizens mobility without utilizing automobiles. The distance between Leucadia Blvd and La Costa Avenue which contain railroad crossings is roughly 1.3 miles.

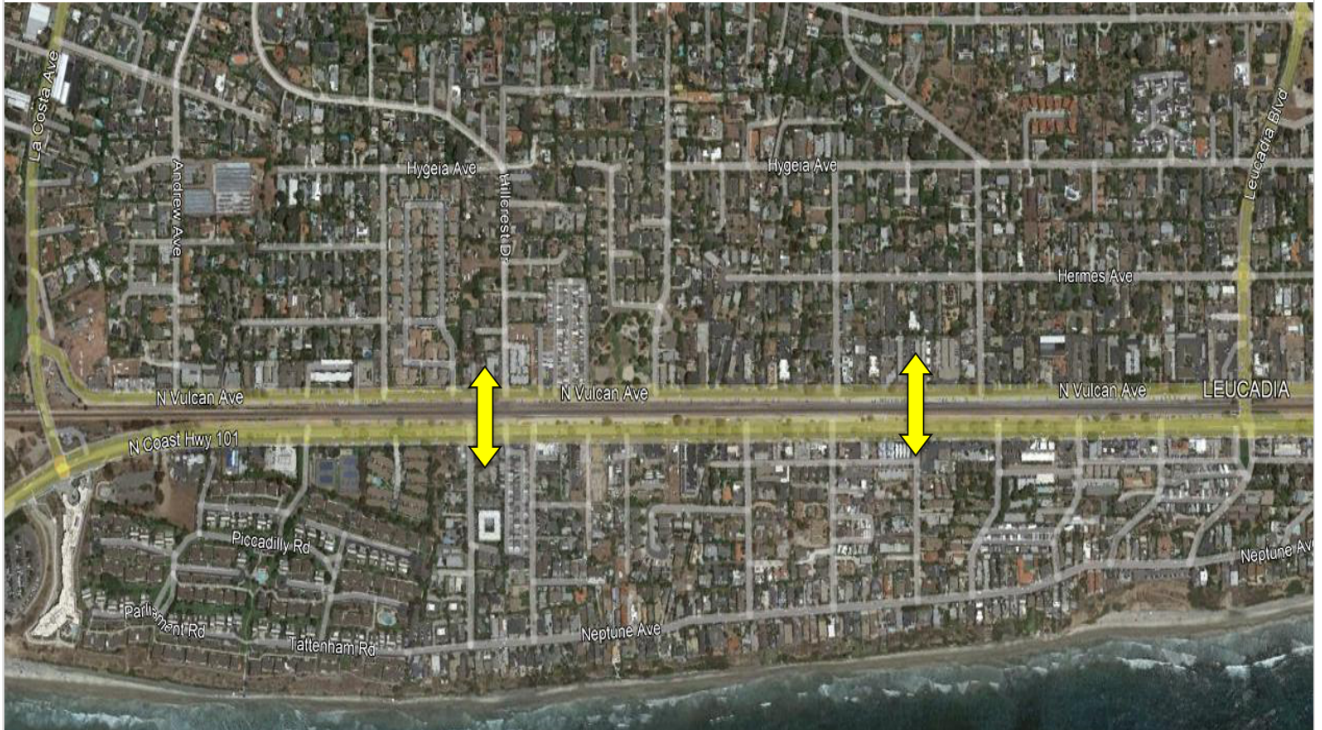
The crossings would eventually need to get approval from the California Public Utilities Commission (CPUC) to design and construct (2) at-grade railroad crossings of the LOSSAN Corridor in Leucadia. The current desired chosen locations are at Grandview Street / Hillcrest Drive and Phoebe Street / Jason Street & Glaucus Street. The proposed crossings will blend and connect into the parking along Vulcan Avenue and the proposed Streetscape improvements along North Coast Highway 101.

We look forward to meeting you and discussing any concerns or questions you may have regarding the proposed crossings. If you are unable to attend or have questions prior to the meeting, please contact Project Manager Matt Widelski by email mwidelski@encinitasca.gov, by phone at 760-633-2862, or by mail at 505 S. Vulcan Ave, Encinitas, CA, 92024 to provide your input.

The Neighborhood Meeting will be held on:

MONDAY, JANUARY 30, 2023
6:00 PM – 7:30 PM
AT
THE CITY OF ENCINITAS – POINSETTIA ROOM
505 SOUTH VULCAN AVENUE
ENCINITAS, CALIFORNIA 92024

LEUCADIA AT-GRADE RAILROAD CROSSINGS



VICINITY MAP
NOT TO SCALE

Possible Crossing Locations

AT GRNADVIEW STREET / HILLCREST DRIVE
AND PHOEBE STREET / JASON STREET &
GLAUCUS STREET